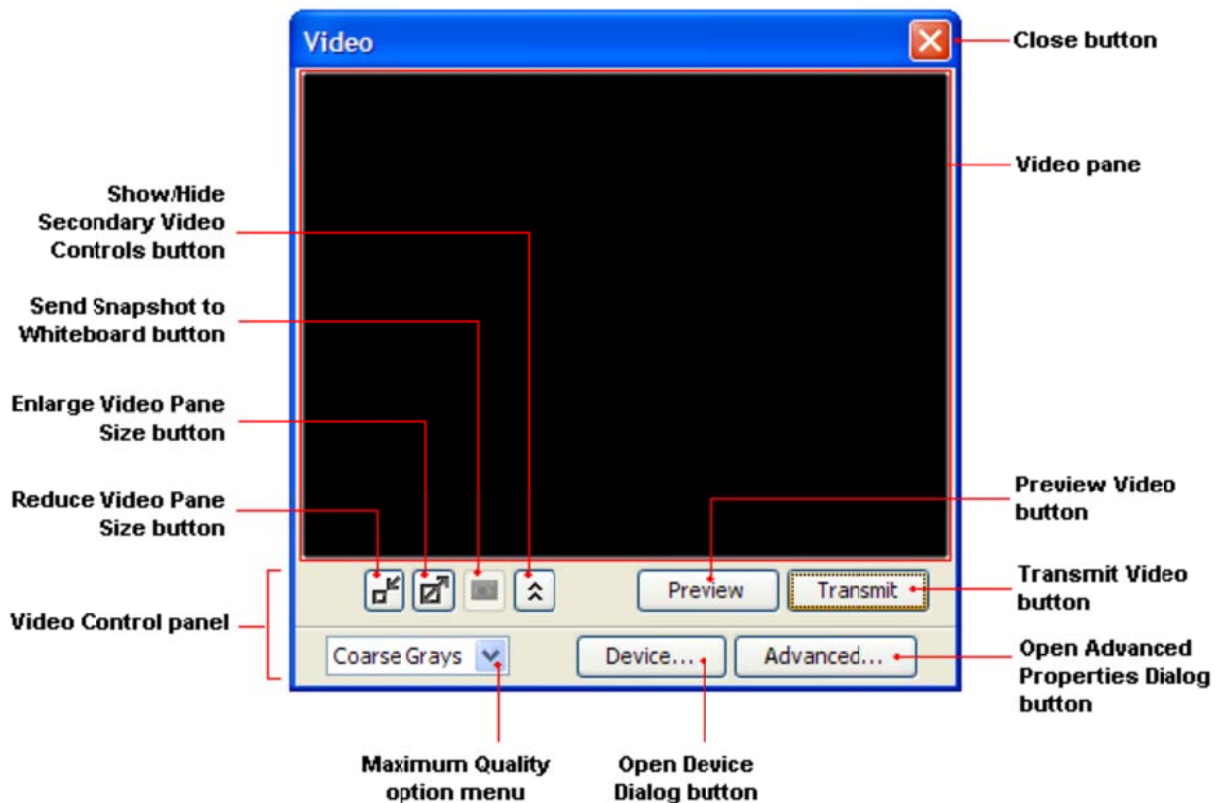




Web Camera – 6 Point Live Video


The Video feature enables you and up to five other participants to transmit live video broadcasts in a session using a video/web cam.






The Video window has the following components:



Start Live Video:



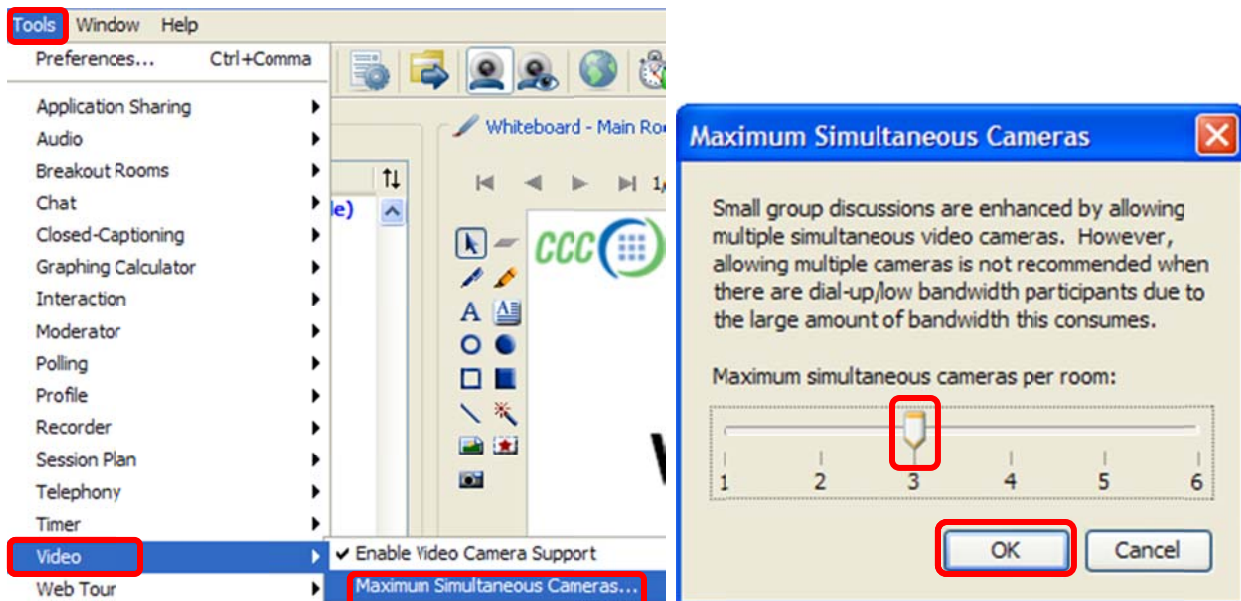
1. Click the **Enable Video** button on the tool bar.
2. Click the **Show Video**  button on the tool bar to open the Video window.

3. Click the **Preview** button to start your camera and privately display the video images the camera is capturing.
4. Expand the Video window to reveal the Video Control panel. Click the **Show Video Control Panel**  icon. Click the **Hide Video Control Panel**  to hide the video control panel .
5. Select the **Image Quality** you want to transmit. The options are Coarse Grays, Coarse Color, Medium Grays, Medium Color, Fine Grays and Fine Color.
6. Click the **Transmit** button to send the video to others in the session.
7. Resize the Video pane to a smaller view by clicking the **Reduce Video Pane**  button. To resize to a larger view, click the **Enlarge Video Pane**  button.
8. Stop transmitting video, but keep the Video window open by clicking the **Transmit** button. No images will be sent.
9. Close the video window by clicking the Hide Video Window  button on the tool menu bar.

6-Point Video Sharing

Adjust the number of shared cameras at any time:

1. On the menu bar select **Tools > Video > Maximum Simultaneous Cameras...**
2. Use the slider to select the number of cameras which can be shared at the same time and click OK button.



Additional Viewing Options:

1. Check the **Follow me** box (Moderators) to control who appears in the main video window. Uncheck the **Follow me** box (Moderators) to allow individuals to choose who appears in their main window.
2. Click any thumbnail to bring it to the main video window.
3. Snapshot an image to the Whiteboard.

