



Presentation Mode

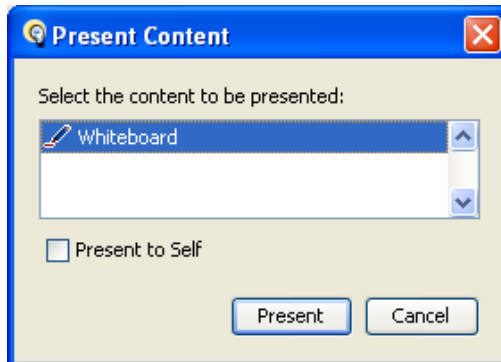
Presentation Mode allows the presenter to change the view of the Whiteboard or an Application Sharing window so it fills the entire CCC Confer interface. When you use Presentation Mode, everyone else in the session automatically will have the same full-window view – until either they “opt out” or you end Presentation Mode and return the content to a normal view.

Displaying Whiteboard Content in Presentation Mode



1. Click the Present Content icon located on the menu bar .
2. Select Whiteboard.

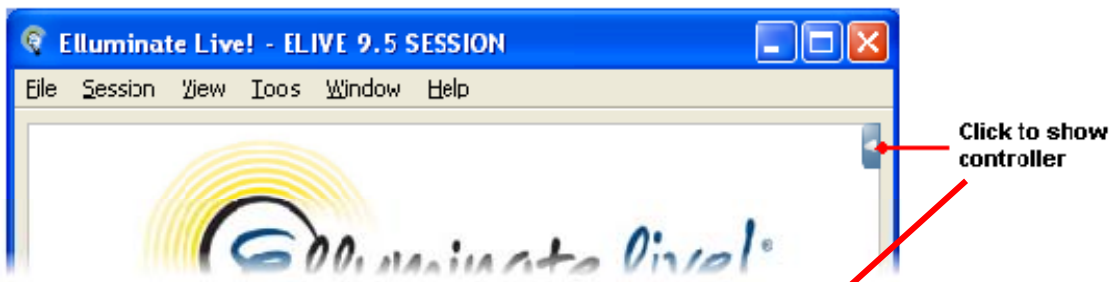
Note: **Present to self** allows you to view your Whiteboard in Presentation Mode as the Participants see it.



3. Click on the **Present** button.

4. To stop **Presentation Mode**, click the terminate icon located on the menu bar  .

Participant View

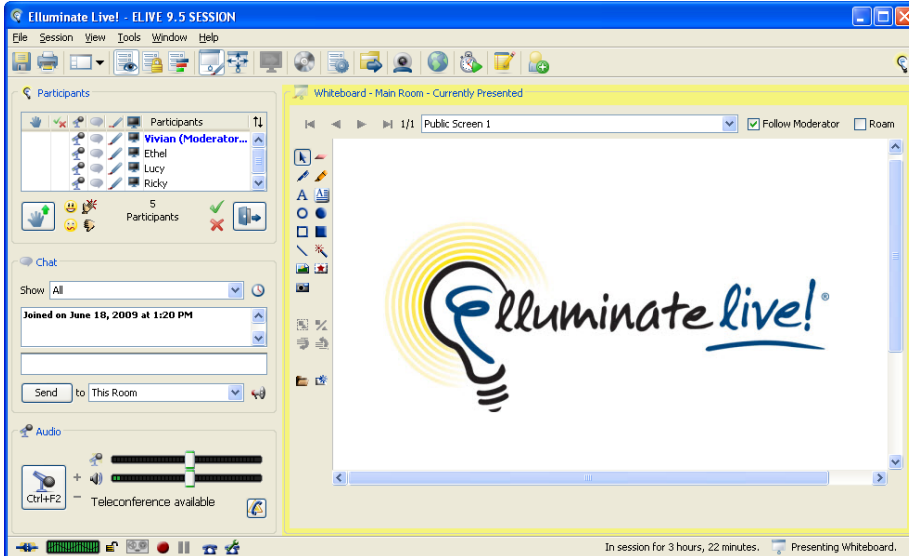


Participants can exit Presentation Mode at anytime by clicking the  “Return to non-presented layout.”



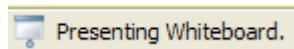
The Participant can return to Presentation Mode by click the return button.


Moderator View



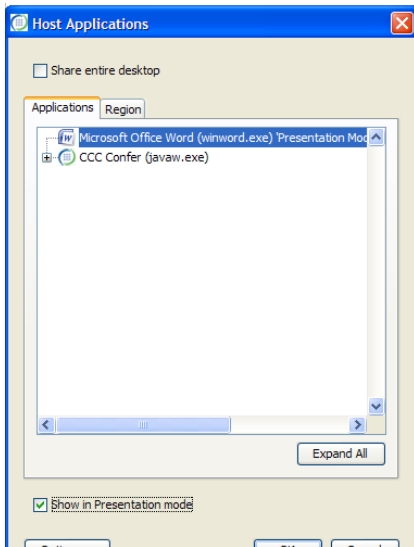
If the Moderator does not select **Present to Self** and has their windows locked, the Whiteboard window will be surrounded by a yellow border containing text to indicate that it has been placed in Presentation Mode.

There is also an indicator in the bottom right-hand side of the Moderator's screen to confirm the Whiteboard is being show to Participants in Presentation Mode.



The Moderator can switch to the presentation view at anytime by clicking the  button.

Display Application Sharing in Presentation Mode



Select application you wish to share.
Click in the Show in Presentation mode box.
Click OK

When Presentation Mode is stopped, Application Sharing will continue until you stop sharing.

Note: Graphing Calculator, Multimedia, Quiz Manager, Web Tour and File Transfer cannot be used during Presentation Mode.